

FILL-RITE®

FR100 SERIES ROTARY HAND PUMP

FR110, FR112, FR112C, FR113

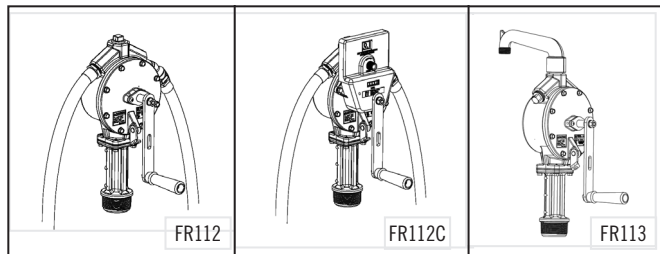
Installation and Operation Manual



MADE IN
USA 
WITH GLOBAL MATERIALS

GR
GORMAN-RUPP
COMPANY

FR110, FR112, FR112C, FR112CL & FR113 Pumps



WARNING

The FR100 Series hand pump shall not be used to pump fuel into any type of aircraft!

WARNING

The FR100 Series hand pump is not suitable to pump fluids for human consumption, or fluids containing water.

Fluid Compatibility	
Compatible Fluids (Okay to pump)	Gasoline, Diesel, Heptane, Kerosene, Stoddard Solvents, Light Oils, Mineral Spirits
Non-Compatible Fluids (DO NOT pump)	Water, Sulfuric Acid, Naptha, Methanol, Methyl Ethyl Ketone (MEK), Acetone, Ammonia, Benzene, Bleach, Chlorine

Safety Instructions

To ensure safe and efficient operation, it is essential to read and follow each of these warnings and precautions:

1. Improper use or installation of this product can cause serious bodily injury or death.
2. Do **NOT** smoke near pump or use pump near an open flame when pumping flammable fluids. Fire could result.
3. A Fill-Rite filter should be used on pump outlet to ensure that no foreign material is transferred to fuel tank.
4. Use gasoline and oil resistant thread sealant or sealant tape on all threaded joints to protect against leakage.
5. Storage tank or barrel should be anchored to prevent tipping in both the full and empty conditions.
6. To minimize static electricity build-up, keep nozzle in contact with container being filled.
7. Regardless of mounting style, all tanks must be properly vented.

Thank You!

Thank you for purchasing the FR100 Series Rotary Hand Pump! Your Fill-Rite® product comes with over 55 years of pump manufacturing experience behind it, providing you the value that comes with superior performance, user-friendly design, outstanding durability, and solid, simple engineering.

FILL-RITE
A GORMAN-RUPP COMPANY

Pump Installation

NOTICE

All pipe threads must have a sealant to protect against leaks. Use sealant tape provided with this pump, or use a gasoline and oil resistant pipe sealant.

1. Screw suction pipe into pump inlet flange and tighten.
2. Extend suction pipe into tank or barrel opening to within 3" of bottom of tank or barrel. Do not rest suction pipe on bottom.
3. Screw inlet flange of pump completely and securely into undamaged tank or barrel bung.

Pumps with Hoses and Nozzles

4. Screw one end of hose into pump discharge opening and the nozzle to the other end of hose.

Pumps with Discharge Spouts

4. Screw discharge spout assembly into top of pump.

Pumps with Meter, Hose, and Nozzle

4. Screw street elbow into top of pump, nipple into street elbow, meter onto nipple.

NOTE: Position the meter to the right of the handle facing operator for ease of operator viewing. Screw one end of hose into meter outlet and the nozzle to the other end of hose.

Installation of Counter

1. Remove crank from shaft.
2. Remove two screws directly above horizontal centerline of pump. Push drive gear onto shaft with flat in gear hole located on longer flat of shaft.
3. Position counter on pump and attach with two screws and two washers.
4. Reattach crank.

Troubleshooting

If Pump Fails to Prime: Check suction line for leaks or obstructions. Check vanes and slots for nicks, burrs, or wear. Check rotor for excessive wear or damage.

Low Pumping Capacity: Remove and clean screen. Check for leaks in suction line. Check rotor and vanes for excessive wear and damage. Check for dirty filter on outlet side.

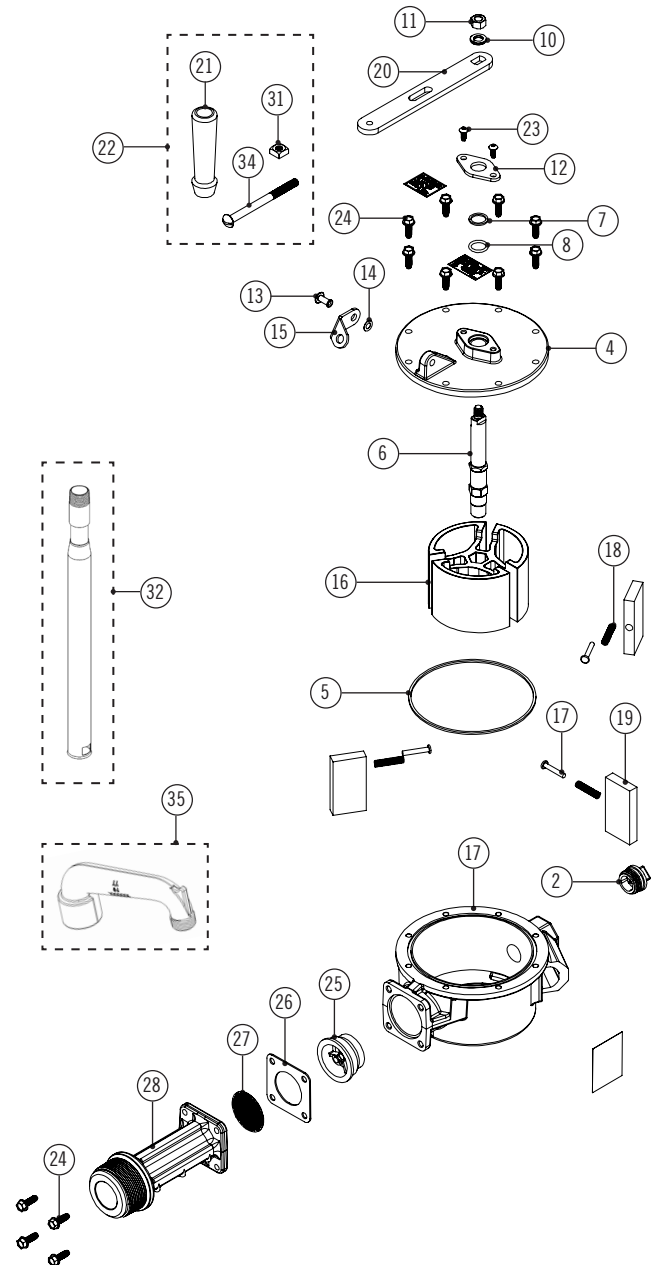
Pump Fluid Leakage: Clean O-ring seal and seat area. Replace seal. Replace vacuum breaker. Tighten covers and joints. Check for dirty filter on outlet side.

Safety Certification



FR100 Series Pump Parts and Kits

ITEM NO.	PART NO.	DESCRIPTION	QTY.
1	H058G9054	8' Hose - UL Listed	Opt.
2	KIT152VBP	Vacuum Breaker	1
3	N/A	Pump Body	1
4	N/A	Cover	1
5	N/A	O-Ring (-159)	1
6	N/A	Shaft	1
7	KIT100WHP	Seal Washer	1
8		O-Ring (-114) Washer	1
9	N/A	Washer	1
10	N/A	3/8 Lockwasher	1
11	N/A	3/8-16 Hex Nut	1
12	N/A	Bearing Plate	1
13	N/A	1/4 x 5/8 Rivet	1
14	N/A	1/4 Spring Washer	1
15	N/A	Locking Link	1
16	N/A	Rotor	1
17	N/A	Vane Pin (Rivet, Flat Head)	3
18	N/A	Vane Spring	3
19	N/A	Vane	3
20	30F4541	Crank	1
21	N/A	Wood Grip	1
22	100F1086	Grip Assembly (Includes items 21, 31, 34)	1
23	N/A	#10-24 x 1/2 TORX PH	2
24	N/A	1/4-20 x 3/4 HWHTRS	12
25	100F0741	Check Valve Assembly	1
26	KIT120SG	Inlet Gasket	1
27	100F0760	Screen	1
28	N/A	Inlet Flange	1
29	5200F1790	Nozzle	Opt.
31	N/A	5/16-18 Square Nut	1
32	1200KTG9099	Suction Pipe	Opt.
34	N/A	5/16-18 x 4 RHMS	1
35	5200F1619	Discharge Spout Assembly	Opt.


Repair and Accessory Kits

100KTF1214	Rebuild Kit (includes #2, 5, 8, 17, 18, 26 & 27)
807CMK	Gallon Meter Kit
807CLMK	Liter Meter Kit
100ACC111	Gallon Counter Kit
100ACC111L	Liter Counter Kit
F1810PMO	Particulate Filter
F1810HMO	Hydrosorb® Filter
1200KTG9075	Filter Head

FILL-RITE
A GORMAN-RUPP COMPANY

Fill-Rite Company
8825 Aviation Drive Fort Wayne, Indiana 46809
P (800) 720-5192 | (+01) 260-747-7524
F (800) 866-4681

fillrite.com | soteria.com | gormanrupp.com